

## Diaquadimethanolbis[4-(1*H*-tetrazol-1-yl)benzoato]zinc(II) dihydrate

**Shu-Ming Zhang**

Department of Chemistry, Nankai University, Tianjin 300071, People's Republic of China, and School of Chemical Engineering and Technology, Hebei University of Technology, Tianjin 300130, People's Republic of China

Correspondence e-mail: zsmchange@sina.com

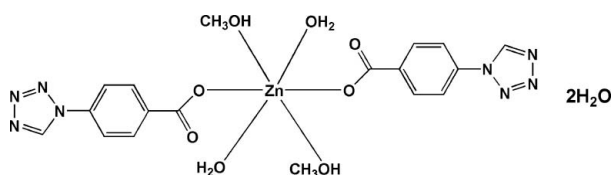
Received 15 March 2008; accepted 29 March 2008

 Key indicators: single-crystal X-ray study;  $T = 293$  K; mean  $\sigma(\text{C}-\text{C}) = 0.003$  Å;  $R$  factor = 0.032;  $wR$  factor = 0.076; data-to-parameter ratio = 14.6.

In the title compound,  $[\text{Zn}(\text{C}_8\text{H}_5\text{N}_4\text{O}_2)_2(\text{CH}_3\text{OH})_2(\text{H}_2\text{O})_2] \cdot 2\text{H}_2\text{O}$ , the  $\text{Zn}^{\text{II}}$  ion lies on an inversion centre and is coordinated by two O atoms from two 4-(tetrazol-1-yl)benzoate ligands, two O atoms from two methanol molecules and two O atoms from two water molecules in a slightly distorted octahedral geometry. In addition, there are two uncoordinated water molecules in the crystal structure. The crystal structure is stabilized by intermolecular  $\text{O}-\text{H} \cdots \text{O}$  hydrogen bonds.

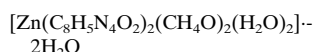
### Related literature

For related literature, see: Zou *et al.* (2005); Dinca *et al.* (2006); Li *et al.* (2007); Zhang & Du (2007).



### Experimental

#### Crystal data



$M_r = 579.84$   
 Monoclinic,  $P2_1/c$   
 $a = 13.220$  (3) Å  
 $b = 7.1551$  (14) Å  
 $c = 12.636$  (3) Å

$\beta = 90.24$  (3)°  
 $V = 1195.3$  (4) Å<sup>3</sup>  
 $Z = 2$   
 Mo  $K\alpha$  radiation  
 $\mu = 1.10$  mm<sup>-1</sup>  
 $T = 293$  (2) K  
 $0.20 \times 0.18 \times 0.16$  mm

#### Data collection

Bruker P4 diffractometer  
 Absorption correction: multi-scan  
 (SADABS; Bruker, 1998)  
 $T_{\text{min}} = 0.810$ ,  $T_{\text{max}} = 0.844$

12254 measured reflections  
 2746 independent reflections  
 2359 reflections with  $I > 2\sigma(I)$   
 $R_{\text{int}} = 0.045$

#### Refinement

$R[F^2 > 2\sigma(F^2)] = 0.032$   
 $wR(F^2) = 0.076$   
 $S = 1.04$   
 2746 reflections  
 188 parameters

H atoms treated by a mixture of independent and constrained refinement  
 $\Delta\rho_{\text{max}} = 0.29$  e Å<sup>-3</sup>  
 $\Delta\rho_{\text{min}} = -0.23$  e Å<sup>-3</sup>

**Table 1**

Selected geometric parameters (Å, °).

|            |             |            |             |
|------------|-------------|------------|-------------|
| Zn1—O1     | 2.0483 (14) | Zn1—O1W    | 2.1342 (14) |
| Zn1—O3     | 2.1078 (15) |            |             |
| O1—Zn1—O3  | 93.56 (6)   | O3—Zn1—O1W | 92.25 (6)   |
| O1—Zn1—O1W | 91.02 (6)   |            |             |

**Table 2**

Hydrogen-bond geometry (Å, °).

| $D-\text{H} \cdots A$                      | $D-\text{H}$ | $\text{H} \cdots A$ | $D \cdots A$ | $D-\text{H} \cdots A$ |
|--|--------------|---------------------|--------------|-----------------------|
| O1W—H1W <sup>i</sup> ···O2W <sup>ii</sup>  | 0.82         | 1.97                | 2.759 (2)    | 160                   |
| O2W—H2W <sup>b</sup> ···O1W <sup>iii</sup> | 0.77 (3)     | 2.07 (3)            | 2.831 (2)    | 175 (3)               |
| O3—H3M···O2W <sup>iii</sup>                | 0.75 (3)     | 1.99 (3)            | 2.726 (2)    | 167 (3)               |

Symmetry codes: (i)  $-x + 1, y - \frac{1}{2}, -z + \frac{3}{2}$ ; (ii)  $x, y, z - 1$ ; (iii)  $x, y - 1, z + 1$ .

Data collection: SMART (Bruker, 1998); cell refinement: SAINT (Bruker, 1998); data reduction: SAINT; program(s) used to solve structure: SHELXS97 (Sheldrick, 2008); program(s) used to refine structure: SHELXL97 (Sheldrick, 2008); molecular graphics: SHELXTL (Sheldrick, 2008); software used to prepare material for publication: SHELXTL.

The authors thank the Natural Science Foundation of Tianjin, China (No. 07JCZDJC00500) for financial support.

Supplementary data and figures for this paper are available from the IUCr electronic archives (Reference: AT2552).

### References

- Bruker (1998). SMART, SAINT and SADABS. Bruker AXS Inc., Madison, Wisconsin, USA.  
 Dinca, M., Dailly, A., Liu, Y., Brown, C. M., Neumann, D. A. & Long, J. R. (2006). *J. Am. Chem. Soc.* **128**, 16876–16883.  
 Li, J. R., Tao, Y., Yu, Q. & Bu, X. H. (2007). *Chem. Commun.* pp. 1527–1529.  
 Sheldrick, G. M. (2008). *Acta Cryst.* **A64**, 112–122.  
 Zhang, S.-M. & Du, J.-L. (2007). *Acta Cryst.* **E63**, m3139.  
 Zou, R.-Q., Cai, L.-Z. & Guo, G.-C. (2005). *J. Mol. Struct.* **737**, 125–129.

**supplementary materials**

*Acta Cryst.* (2008). E64, m624 [ doi:10.1107/S1600536808008490 ]

## Diaquadimethanolbis[4-(1*H*-tetrazol-1-yl)benzoato]zinc(II) dihydrate

S.-M. Zhang

### Comment

Coordination architectures formed from 1*H*-tetrazol and its derivatives have attracted wide attentions in recent years, due to not only their fascinating structures and topologies, but also their potential applications in luminescence, magnetism and gas storage (Dinca, *et al.*, 2006; Li, *et al.*, 2007). However, there are rare reports (Zou, *et al.*, 2005) of the coordination systems using the benzoic acids with N-heterocycle as ligands. So we synthesized several coordination compounds by such ligands. And here we report the structure of title compound (I).

The structure of (I) consists of discrete neutral unit  $[\text{Zn}(\text{C}_8\text{H}_5\text{N}_4\text{O}_2)_2(\text{CH}_3\text{OH})_2(\text{H}_2\text{O})_2]$ , and two lattice water molecules (Fig. 1), atom Zn1 lies on an inversion centre and is coordinated by two O atoms from two 4-(tetrazol-1-yl) benzoate ligands, two O atoms from two methanol molecules and two O atoms from two water molecules in a distorted octahedral geometry. The metal ion of (I) is bonded to the carboxyl group of 4-(tetrazol-1-yl) benzoate, which is remarkably different from our previous reported compound that using the same ligand with N donor coordinating to metal ion (Zhang *et al.*, 2007). The crystal stacking of (I) (Fig. 2) is stabilized by the intermolecular O—H $\cdots$ O hydrogen bonds (Table 2).

### Experimental

A solution of  $\text{Zn}(\text{NO}_3)_2 \cdot 6\text{H}_2\text{O}$  (0.1 mmol) in water (5 ml) was added to a solution of 4-(tetrazol-1-yl) benzoic acid (38 mg, 0.2 mmol) and sodium hydroxide (8 mg, 0.2 mmol) in methanol (5 mL). The reaction mixture was stirred for 30 min and then filtered. Colourless crystals of (I) suitable for X-ray diffraction were obtained by slow evaporation after two weeks [yield: 46%].

### Refinement

H atoms of C were included in calculated positions and treated in the subsequent refinement as riding atoms, with C—H = 0.93 and 0.96 Å and  $U_{\text{iso}}(\text{H}) = 1.2$  and  $1.5 U_{\text{eq}}(\text{C}, \text{N})$ . The H atoms of water was located in Fourier difference map and refined without restraint.

### Figures

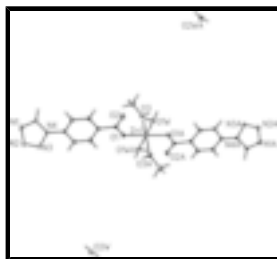


Fig. 1. The molecular structure of (I), with 30% probability displacement ellipsoids. [Symmetry code: (A)  $-x+1, -y, -z+2$ .]

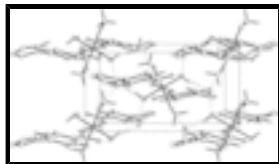


Fig. 2. A portion of the crystal stacking structure, showing the intermolecular O—H...O, hydrogen bonds as dashed lines.

## Diaquadimethanolbis[4-(1H-tetrazol-1-yl)benzoato]zinc(II) dihydrate

### Crystal data

|  |   |
|--|---|
| $[\text{Zn}(\text{C}_8\text{H}_5\text{N}_4\text{O}_2)_2(\text{CH}_4\text{O})_2(\text{H}_2\text{O})_2] \cdot 2\text{H}_2\text{O}$ | $F_{000} = 600$                           |
| $M_r = 579.84$   | $D_x = 1.611 \text{ Mg m}^{-3}$           |
| Monoclinic, $P2_1/c$   | Mo $K\alpha$ radiation                    |
| Hall symbol: $-P 2ybc$   | $\lambda = 0.71073 \text{ \AA}$           |
| $a = 13.220 (3) \text{ \AA}$   | Cell parameters from 11248 reflections    |
| $b = 7.1551 (14) \text{ \AA}$  | $\theta = 3.1\text{--}27.6^\circ$         |
| $c = 12.636 (3) \text{ \AA}$   | $\mu = 1.10 \text{ mm}^{-1}$              |
| $\beta = 90.24 (3)^\circ$  | $T = 293 (2) \text{ K}$                   |
| $V = 1195.3 (4) \text{ \AA}^3$   | Block, colourless                         |
| $Z = 2$  | $0.20 \times 0.18 \times 0.16 \text{ mm}$ |

### Data collection

|  |  |
|--|--|
| Bruker P4 diffractometer                                 | 2746 independent reflections           |
| Radiation source: fine-focus sealed tube                 | 2359 reflections with $I > 2\sigma(I)$ |
| Monochromator: graphite                                  | $R_{\text{int}} = 0.045$               |
| $T = 293(2) \text{ K}$                                   | $\theta_{\text{max}} = 27.5^\circ$     |
| $\omega$ scans   | $\theta_{\text{min}} = 3.1^\circ$      |
| Absorption correction: multi-scan (SADABS; Bruker, 1998) | $h = -17 \rightarrow 17$               |
| $T_{\text{min}} = 0.810$ , $T_{\text{max}} = 0.844$      | $k = -9 \rightarrow 9$                 |
| 12254 measured reflections                               | $l = -16 \rightarrow 16$               |

### Refinement

|                                 |  |
|---------------------------------|--|
| Refinement on $F^2$             | Hydrogen site location: inferred from neighbouring sites               |
| Least-squares matrix: full      | H atoms treated by a mixture of independent and constrained refinement |
| $R[F^2 > 2\sigma(F^2)] = 0.032$ | $w = 1/[\sigma^2(F_o^2) + (0.0297P)^2 + 0.5826P]$                      |
| $wR(F^2) = 0.076$               | where $P = (F_o^2 + 2F_c^2)/3$   |
| $S = 1.04$                      | $(\Delta/\sigma)_{\text{max}} = 0.001$                                 |
| 2746 reflections                | $\Delta\rho_{\text{max}} = 0.29 \text{ e \AA}^{-3}$                    |
| 188 parameters                  | $\Delta\rho_{\text{min}} = -0.23 \text{ e \AA}^{-3}$                   |
|                                 | Extinction correction: SHELXL97 (Sheldrick, 2008),                     |
|                                 | $F_c^* = kF_c [1 + 0.001x F_c^2 \lambda^3 / \sin(2\theta)]^{-1/4}$     |

Primary atom site location: structure-invariant direct methods Extinction coefficient: 0.0228 (12)  
 Secondary atom site location: difference Fourier map

*Special details*

**Geometry.** All e.s.d.'s (except the e.s.d. in the dihedral angle between two l.s. planes) are estimated using the full covariance matrix. The cell e.s.d.'s are taken into account individually in the estimation of e.s.d.'s in distances, angles and torsion angles; correlations between e.s.d.'s in cell parameters are only used when they are defined by crystal symmetry. An approximate (isotropic) treatment of cell e.s.d.'s is used for estimating e.s.d.'s involving l.s. planes.

**Refinement.** Refinement of  $F^2$  against ALL reflections. The weighted  $R$ -factor  $wR$  and goodness of fit  $S$  are based on  $F^2$ , conventional  $R$ -factors  $R$  are based on  $F$ , with  $F$  set to zero for negative  $F^2$ . The threshold expression of  $F^2 > \sigma(F^2)$  is used only for calculating  $R$ -factors(gt) *etc.* and is not relevant to the choice of reflections for refinement.  $R$ -factors based on  $F^2$  are statistically about twice as large as those based on  $F$ , and  $R$ -factors based on ALL data will be even larger.

*Fractional atomic coordinates and isotropic or equivalent isotropic displacement parameters ( $\text{\AA}^2$ )*

|      | $x$          | $y$          | $z$          | $U_{\text{iso}}^*/U_{\text{eq}}$ |
|------|--------------|--------------|--------------|----------------------------------|
| Zn1  | 0.5000       | 0.0000       | 1.0000       | 0.02298 (11)                     |
| O1   | 0.63696 (9)  | 0.0452 (2)   | 0.92928 (10) | 0.0313 (3)                       |
| O2   | 0.73211 (10) | 0.1468 (2)   | 1.06367 (10) | 0.0399 (4)                       |
| C2   | 0.97854 (12) | 0.0991 (2)   | 0.77039 (14) | 0.0231 (4)                       |
| N4   | 1.06694 (11) | 0.0940 (2)   | 0.70586 (12) | 0.0243 (3)                       |
| C5   | 0.80990 (13) | 0.1028 (2)   | 0.89760 (14) | 0.0228 (4)                       |
| N3   | 1.06465 (12) | 0.1453 (3)   | 0.60316 (13) | 0.0339 (4)                       |
| C4   | 0.90418 (13) | 0.1480 (3)   | 0.93867 (14) | 0.0259 (4)                       |
| H4   | 0.9104       | 0.1793       | 1.0098       | 0.031*                           |
| N1   | 1.21854 (12) | 0.0669 (3)   | 0.64661 (14) | 0.0342 (4)                       |
| C7   | 0.88492 (14) | 0.0580 (3)   | 0.72624 (15) | 0.0282 (4)                       |
| H7   | 0.8786       | 0.0294       | 0.6547       | 0.034*                           |
| C3   | 0.98863 (14) | 0.1470 (3)   | 0.87560 (15) | 0.0274 (4)                       |
| H3   | 1.0516       | 0.1782       | 0.9035       | 0.033*                           |
| C8   | 0.71954 (13) | 0.0989 (3)   | 0.96960 (14) | 0.0256 (4)                       |
| C1   | 1.16184 (14) | 0.0462 (3)   | 0.72993 (16) | 0.0291 (4)                       |
| H1   | 1.1840       | 0.0047       | 0.7958       | 0.035*                           |
| C6   | 0.80137 (14) | 0.0608 (3)   | 0.79125 (15) | 0.0279 (4)                       |
| H6   | 0.7380       | 0.0339       | 0.7629       | 0.033*                           |
| N2   | 1.15560 (13) | 0.1290 (3)   | 0.56869 (14) | 0.0375 (4)                       |
| O3   | 0.54347 (11) | -0.2616 (2)  | 1.06193 (13) | 0.0380 (4)                       |
| C9   | 0.63908 (16) | -0.3252 (3)  | 1.0949 (2)   | 0.0470 (6)                       |
| H9A  | 0.6907       | -0.2579      | 1.0578       | 0.071*                           |
| H9B  | 0.6451       | -0.4563      | 1.0799       | 0.071*                           |
| H9C  | 0.6467       | -0.3050      | 1.1696       | 0.071*                           |
| O2W  | 0.43377 (14) | 0.4734 (2)   | 0.16558 (13) | 0.0340 (3)                       |
| O1W  | 0.54904 (11) | 0.14327 (19) | 1.13919 (10) | 0.0289 (3)                       |
| H1WA | 0.5471       | 0.0718       | 1.1898       | 0.043*                           |
| H2WA | 0.378 (2)    | 0.457 (4)    | 0.156 (2)    | 0.053 (9)*                       |
| H2WB | 0.463 (2)    | 0.382 (4)    | 0.156 (2)    | 0.061 (10)*                      |

## supplementary materials

|      |             |            |           |            |
|------|-------------|------------|-----------|------------|
| H1WB | 0.612 (2)   | 0.155 (4)  | 1.121 (2) | 0.058 (8)* |
| H3M  | 0.5060 (19) | -0.325 (4) | 1.088 (2) | 0.047 (8)* |

### Atomic displacement parameters ( $\text{\AA}^2$ )

|     | $U^{11}$     | $U^{22}$     | $U^{33}$     | $U^{12}$     | $U^{13}$      | $U^{23}$     |
|-----|--------------|--------------|--------------|--------------|---------------|--------------|
| Zn1 | 0.01705 (16) | 0.02848 (18) | 0.02340 (17) | 0.00002 (12) | -0.00056 (11) | 0.00133 (13) |
| O1  | 0.0173 (6)   | 0.0487 (9)   | 0.0279 (7)   | -0.0049 (6)  | 0.0003 (5)    | 0.0000 (6)   |
| O2  | 0.0265 (7)   | 0.0670 (11)  | 0.0261 (7)   | -0.0095 (7)  | 0.0019 (6)    | -0.0061 (7)  |
| C2  | 0.0174 (9)   | 0.0241 (9)   | 0.0279 (9)   | -0.0001 (7)  | 0.0021 (7)    | 0.0030 (7)   |
| N4  | 0.0191 (7)   | 0.0275 (8)   | 0.0261 (8)   | 0.0008 (6)   | -0.0003 (6)   | 0.0027 (7)   |
| C5  | 0.0184 (8)   | 0.0231 (9)   | 0.0270 (9)   | -0.0014 (7)  | 0.0000 (7)    | 0.0016 (7)   |
| N3  | 0.0277 (9)   | 0.0455 (10)  | 0.0284 (9)   | 0.0043 (7)   | 0.0021 (7)    | 0.0072 (8)   |
| C4  | 0.0240 (9)   | 0.0310 (10)  | 0.0227 (9)   | -0.0040 (7)  | -0.0023 (7)   | 0.0004 (8)   |
| N1  | 0.0239 (9)   | 0.0384 (9)   | 0.0403 (10)  | 0.0029 (7)   | 0.0040 (7)    | 0.0031 (8)   |
| C7  | 0.0244 (9)   | 0.0352 (10)  | 0.0249 (9)   | -0.0018 (8)  | -0.0025 (8)   | -0.0039 (8)  |
| C3  | 0.0190 (9)   | 0.0330 (10)  | 0.0301 (10)  | -0.0040 (7)  | -0.0053 (7)   | 0.0009 (8)   |
| C8  | 0.0199 (9)   | 0.0283 (10)  | 0.0287 (10)  | -0.0013 (7)  | -0.0004 (7)   | 0.0038 (8)   |
| C1  | 0.0214 (9)   | 0.0331 (11)  | 0.0328 (10)  | 0.0023 (7)   | -0.0020 (8)   | 0.0010 (8)   |
| C6  | 0.0179 (9)   | 0.0362 (10)  | 0.0294 (10)  | -0.0033 (7)  | -0.0039 (7)   | -0.0030 (8)  |
| N2  | 0.0290 (9)   | 0.0478 (11)  | 0.0358 (10)  | 0.0035 (8)   | 0.0080 (7)    | 0.0093 (8)   |
| O3  | 0.0261 (7)   | 0.0373 (9)   | 0.0505 (9)   | 0.0028 (7)   | -0.0007 (7)   | 0.0194 (7)   |
| C9  | 0.0323 (12)  | 0.0468 (14)  | 0.0620 (15)  | 0.0093 (10)  | -0.0041 (11)  | 0.0120 (12)  |
| O2W | 0.0277 (8)   | 0.0361 (9)   | 0.0382 (8)   | -0.0020 (7)  | 0.0031 (7)    | -0.0057 (7)  |
| O1W | 0.0251 (7)   | 0.0359 (8)   | 0.0257 (7)   | 0.0002 (6)   | 0.0004 (6)    | 0.0029 (6)   |

### Geometric parameters ( $\text{\AA}$ , $^\circ$ )

|                        |             |          |             |
|------------------------|-------------|----------|-------------|
| Zn1—O1                 | 2.0483 (14) | C4—H4    | 0.9300      |
| Zn1—O1 <sup>i</sup>    | 2.0483 (14) | N1—C1    | 1.304 (3)   |
| Zn1—O3                 | 2.1078 (15) | N1—N2    | 1.361 (2)   |
| Zn1—O3 <sup>i</sup>    | 2.1078 (15) | C7—C6    | 1.379 (3)   |
| Zn1—O1W <sup>i</sup>   | 2.1342 (14) | C7—H7    | 0.9300      |
| Zn1—O1W                | 2.1342 (14) | C3—H3    | 0.9300      |
| O1—C8                  | 1.263 (2)   | C1—H1    | 0.9300      |
| O2—C8                  | 1.247 (2)   | C6—H6    | 0.9300      |
| C2—C3                  | 1.379 (3)   | O3—C9    | 1.405 (2)   |
| C2—C7                  | 1.387 (2)   | O3—H3M   | 0.75 (3)    |
| C2—N4                  | 1.428 (2)   | C9—H9A   | 0.9600      |
| N4—C1                  | 1.334 (2)   | C9—H9B   | 0.9600      |
| N4—N3                  | 1.349 (2)   | C9—H9C   | 0.9600      |
| C5—C6                  | 1.381 (3)   | O2W—H2WA | 0.75 (3)    |
| C5—C4                  | 1.386 (2)   | O2W—H2WB | 0.77 (3)    |
| C5—C8                  | 1.505 (2)   | O1W—H1WA | 0.8200      |
| N3—N2                  | 1.286 (2)   | O1W—H1WB | 0.87 (3)    |
| C4—C3                  | 1.375 (3)   |          |             |
| O1—Zn1—O1 <sup>i</sup> | 180.00 (3)  | C6—C7—C2 | 118.22 (17) |
| O1—Zn1—O3              | 93.56 (6)   | C6—C7—H7 | 120.9       |

|                                       |              |                             |              |
|---------------------------------------|--------------|-----------------------------|--------------|
| O1 <sup>i</sup> —Zn1—O3               | 86.44 (6)    | C2—C7—H7                    | 120.9        |
| O1—Zn1—O3 <sup>i</sup>                | 86.44 (6)    | C4—C3—C2                    | 119.00 (17)  |
| O1 <sup>i</sup> —Zn1—O3 <sup>i</sup>  | 93.56 (6)    | C4—C3—H3                    | 120.5        |
| O3—Zn1—O3 <sup>i</sup>                | 180.0        | C2—C3—H3                    | 120.5        |
| O1—Zn1—O1W <sup>i</sup>               | 88.98 (6)    | O2—C8—O1                    | 125.41 (17)  |
| O1 <sup>i</sup> —Zn1—O1W <sup>i</sup> | 91.02 (6)    | O2—C8—C5                    | 117.92 (16)  |
| O3—Zn1—O1W <sup>i</sup>               | 87.75 (6)    | O1—C8—C5                    | 116.66 (16)  |
| O3 <sup>i</sup> —Zn1—O1W <sup>i</sup> | 92.25 (6)    | N1—C1—N4                    | 109.28 (17)  |
| O1—Zn1—O1W                            | 91.02 (6)    | N1—C1—H1                    | 125.4        |
| O1 <sup>i</sup> —Zn1—O1W              | 88.98 (6)    | N4—C1—H1                    | 125.4        |
| O3—Zn1—O1W                            | 92.25 (6)    | C7—C6—C5                    | 121.35 (17)  |
| O3 <sup>i</sup> —Zn1—O1W              | 87.75 (6)    | C7—C6—H6                    | 119.3        |
| O1W <sup>i</sup> —Zn1—O1W             | 180.0        | C5—C6—H6                    | 119.3        |
| C8—O1—Zn1                             | 129.52 (12)  | N3—N2—N1                    | 110.75 (16)  |
| C3—C2—C7                              | 121.54 (17)  | C9—O3—Zn1                   | 129.90 (14)  |
| C3—C2—N4                              | 118.74 (16)  | C9—O3—H3M                   | 105 (2)      |
| C7—C2—N4                              | 119.72 (16)  | Zn1—O3—H3M                  | 122 (2)      |
| C1—N4—N3                              | 107.84 (15)  | O3—C9—H9A                   | 109.5        |
| C1—N4—C2                              | 130.34 (16)  | O3—C9—H9B                   | 109.5        |
| N3—N4—C2                              | 121.81 (15)  | H9A—C9—H9B                  | 109.5        |
| C6—C5—C4                              | 118.98 (17)  | O3—C9—H9C                   | 109.5        |
| C6—C5—C8                              | 121.50 (16)  | H9A—C9—H9C                  | 109.5        |
| C4—C5—C8                              | 119.52 (16)  | H9B—C9—H9C                  | 109.5        |
| N2—N3—N4                              | 106.50 (15)  | H2WA—O2W—H2WB               | 109 (3)      |
| C3—C4—C5                              | 120.86 (17)  | Zn1—O1W—H1WA                | 109.5        |
| C3—C4—H4                              | 119.6        | Zn1—O1W—H1WB                | 96.5 (17)    |
| C5—C4—H4                              | 119.6        | H1WA—O1W—H1WB               | 107.7        |
| C1—N1—N2                              | 105.63 (15)  |                             |              |
| O1 <sup>i</sup> —Zn1—O1—C8            | 73 (100)     | Zn1—O1—C8—C5                | 174.81 (12)  |
| O3—Zn1—O1—C8                          | -78.56 (17)  | C6—C5—C8—O2                 | -176.77 (19) |
| O3 <sup>i</sup> —Zn1—O1—C8            | 101.44 (17)  | C4—C5—C8—O2                 | 3.7 (3)      |
| O1W <sup>i</sup> —Zn1—O1—C8           | -166.24 (17) | C6—C5—C8—O1                 | 3.9 (3)      |
| O1W—Zn1—O1—C8                         | 13.76 (17)   | C4—C5—C8—O1                 | -175.56 (17) |
| C3—C2—N4—C1                           | 33.9 (3)     | N2—N1—C1—N4                 | -0.2 (2)     |
| C7—C2—N4—C1                           | -146.7 (2)   | N3—N4—C1—N1                 | 0.4 (2)      |
| C3—C2—N4—N3                           | -144.73 (19) | C2—N4—C1—N1                 | -178.39 (18) |
| C7—C2—N4—N3                           | 34.7 (3)     | C2—C7—C6—C5                 | -0.2 (3)     |
| C1—N4—N3—N2                           | -0.4 (2)     | C4—C5—C6—C7                 | 1.8 (3)      |
| C2—N4—N3—N2                           | 178.53 (17)  | C8—C5—C6—C7                 | -177.68 (18) |
| C6—C5—C4—C3                           | -1.5 (3)     | N4—N3—N2—N1                 | 0.2 (2)      |
| C8—C5—C4—C3                           | 177.97 (17)  | C1—N1—N2—N3                 | 0.0 (2)      |
| C3—C2—C7—C6                           | -1.8 (3)     | O1—Zn1—O3—C9                | 31.19 (19)   |
| N4—C2—C7—C6                           | 178.77 (17)  | O1 <sup>i</sup> —Zn1—O3—C9  | -148.81 (19) |
| C5—C4—C3—C2                           | -0.4 (3)     | O3 <sup>i</sup> —Zn1—O3—C9  | -165 (73)    |
| C7—C2—C3—C4                           | 2.1 (3)      | O1W <sup>i</sup> —Zn1—O3—C9 | 120.04 (19)  |

## supplementary materials

---

|              |              |               |             |
|--------------|--------------|---------------|-------------|
| N4—C2—C3—C4  | -178.49 (17) | O1W—Zn1—O3—C9 | -59.96 (19) |
| Zn1—O1—C8—O2 | -4.4 (3)     |               |             |

Symmetry codes: (i)  $-x+1, -y, -z+2$ .

### *Hydrogen-bond geometry (Å, °)*

| <i>D—H...A</i>                | <i>D—H</i> | <i>H...A</i> | <i>D...A</i> | <i>D—H...A</i> |
|-------------------------------|------------|--------------|--------------|----------------|
| O1W—H1WA...O2W <sup>ii</sup>  | 0.82       | 1.97         | 2.759 (2)    | 160            |
| O2W—H2WB...O1W <sup>iii</sup> | 0.77 (3)   | 2.07 (3)     | 2.831 (2)    | 175 (3)        |
| O3—H3M...O2W <sup>iv</sup>    | 0.75 (3)   | 1.99 (3)     | 2.726 (2)    | 167 (3)        |

Symmetry codes: (ii)  $-x+1, y-1/2, -z+3/2$ ; (iii)  $x, y, z-1$ ; (iv)  $x, y-1, z+1$ .



Fig. 1

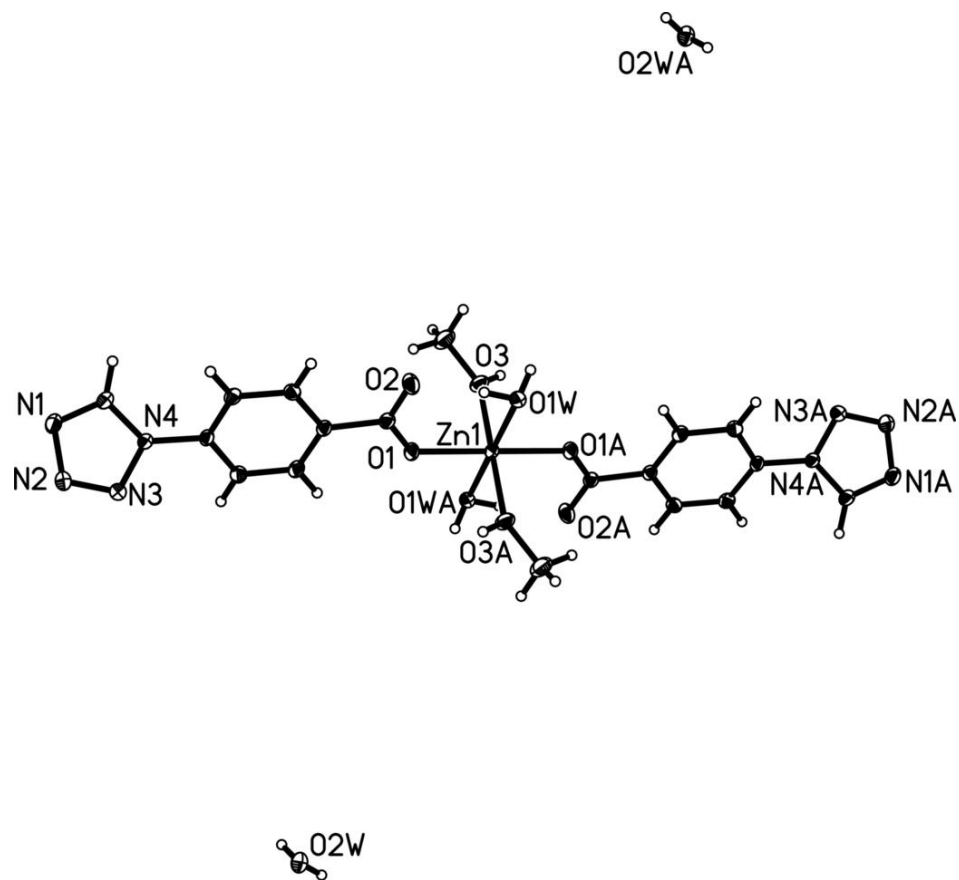


Fig. 2

